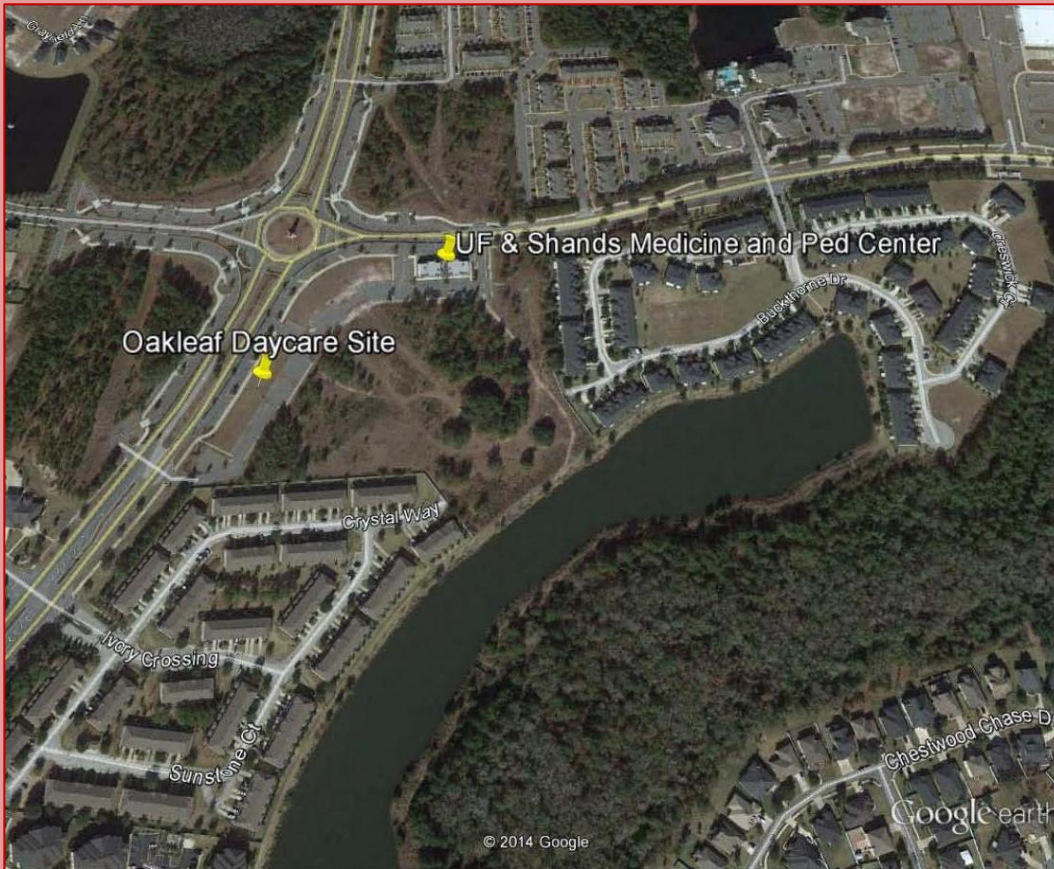


Oakleaf Plantation Daycare Build to Suit Opportunity



Location: Southeast Village Center at Oakleaf Plantation Pkwy and Plantation Oaks Blvd

Site: Up to 10,000 Sf build to suit daycare

Zoning: PUD/DRI


Comments: Owner looking to build a daycare for user. Close proximity to 2 Elementary Schools, a Middle School and High School located in Clay County.

Lease Terms: 10 Yrs Min

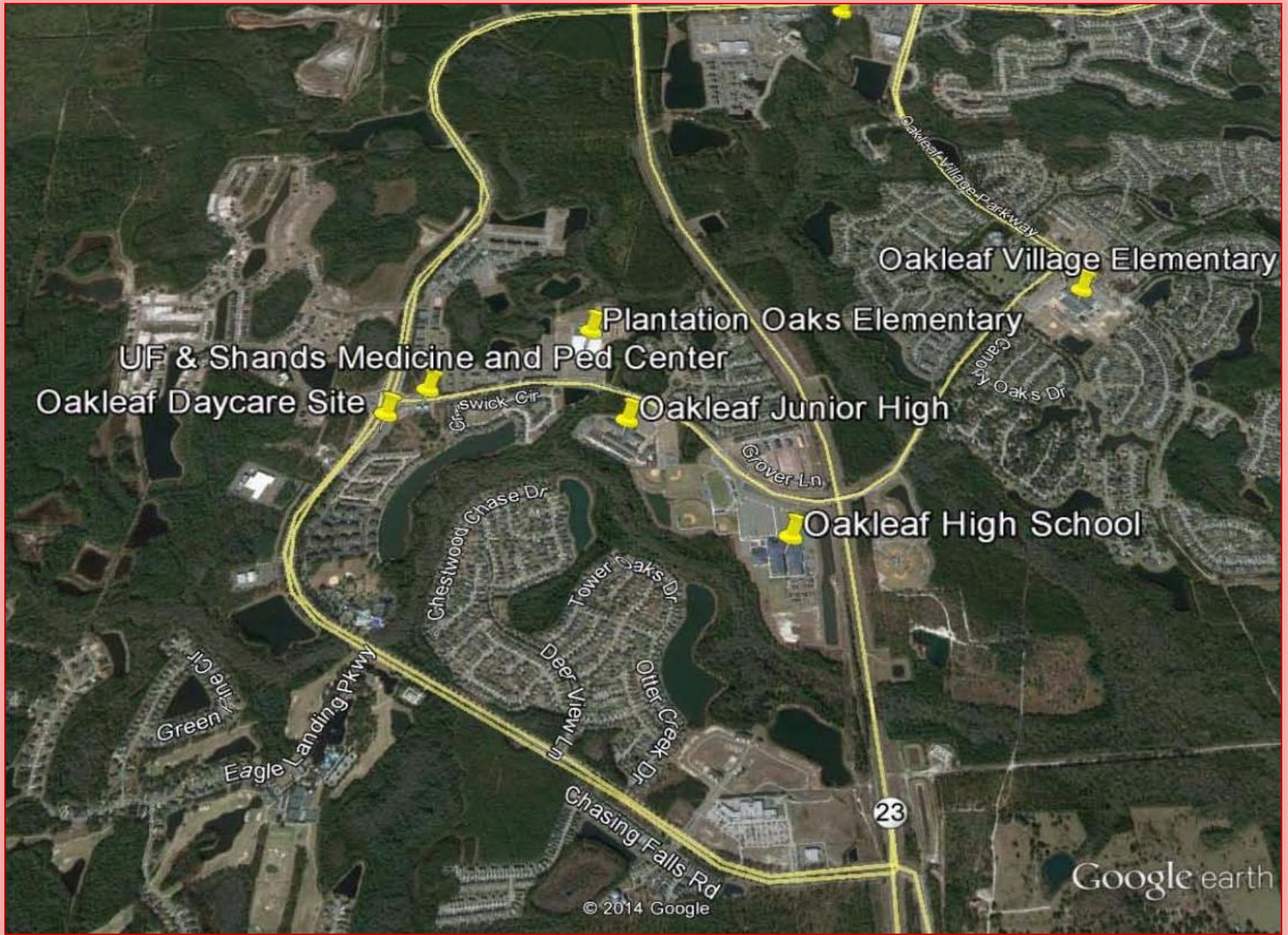
Rate: TBD

Contact: John "JP" Foshee Jr.- <Cell> 904.710.0681 <Email> jpfoshee@yahoo.com

Pate Foshee- <Cell> 904.238.8663 <Email> pfoshee@bellsouth.net


CASTLEROCK REALTY
Florida Licensed Real Estate Broker

This information contained herein has been gathered from sources deemed reliable. Buyer or tenant should certify all information independently. This property is subject to withdrawal, prior sale, errors or omissions, changes in price and term, all without notice. Castlerock Realty LLC is a licensed real estate broker



This information contained herein has been gathered from sources deemed reliable. Buyer or tenant should certify all information independently. This property is subject to withdrawal, prior sale, errors or omissions, changes in price and term, all without notice. Castlerock Realty LLC is a licensed real estate broker